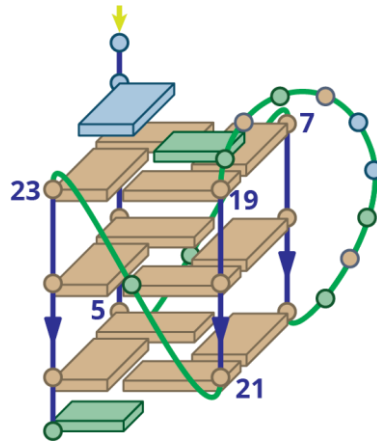


2LPW

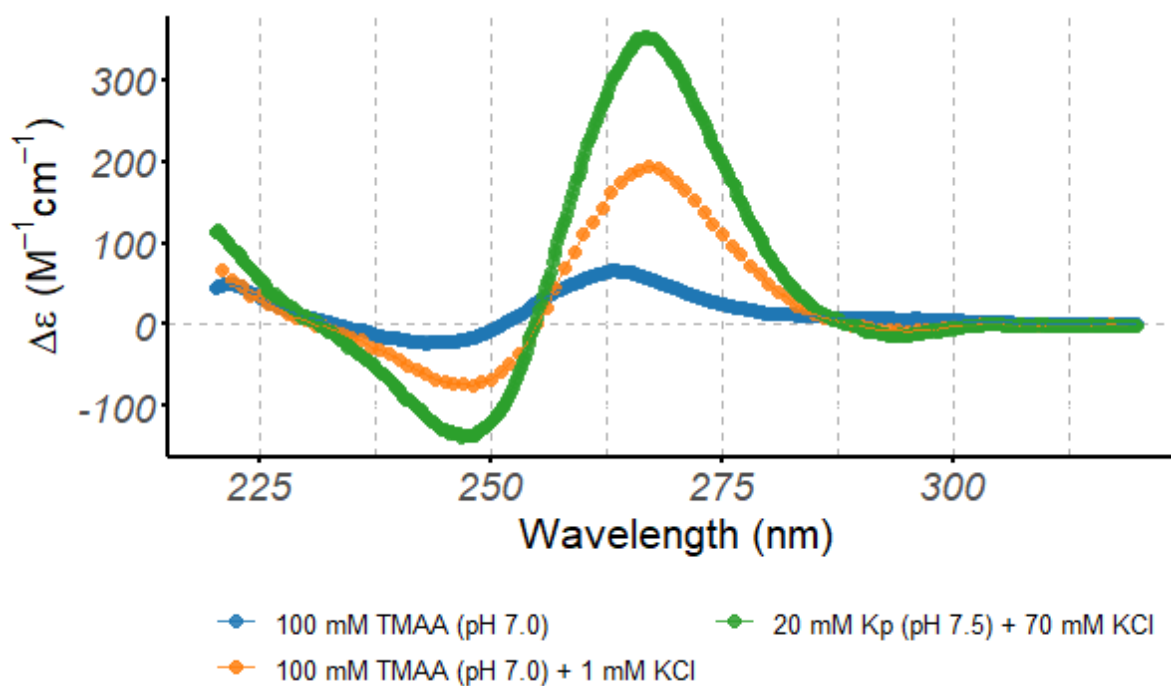
Sequence (5' to 3')	$\epsilon_{260nm} (M^{-1}cm^{-1})$	DOI
AAGGGTGGGTGTAAGTGTGGGTGGGT	265100	10.1021/ja208993r



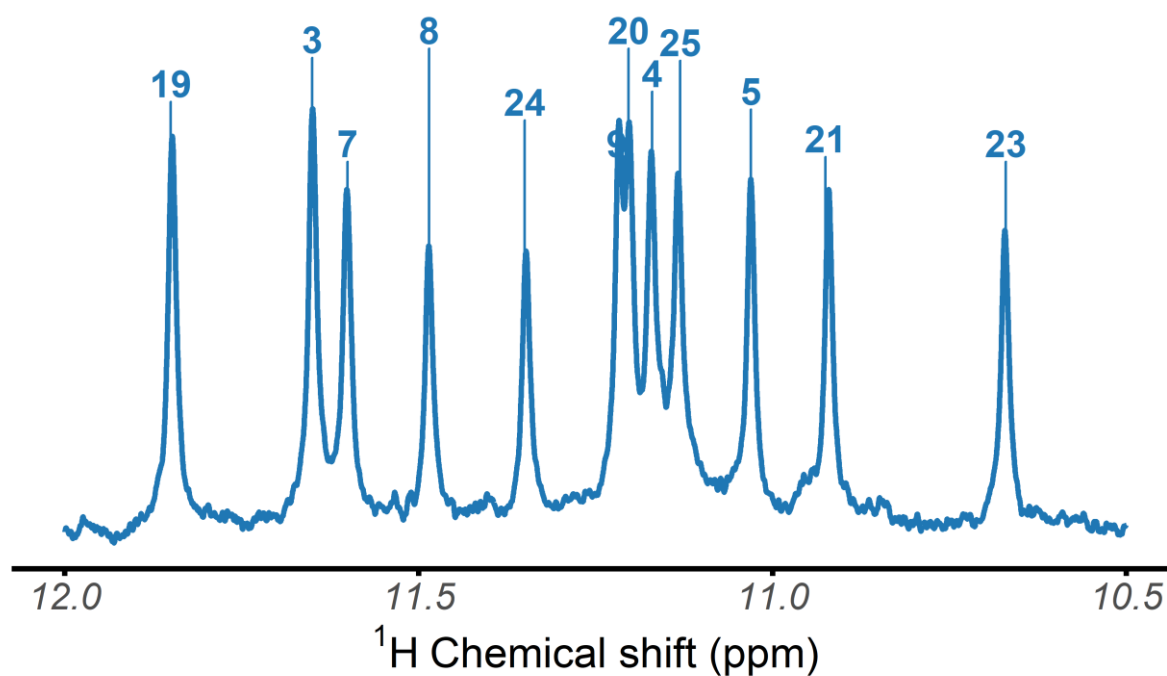
Legend

strand direction (5' to 3')	loop	adenine
nucleotide number (5' to 3')	syn	cytosine
5' end	anti	G-quartet guanine
	ligand	not-G-quartet guanine
		thymine

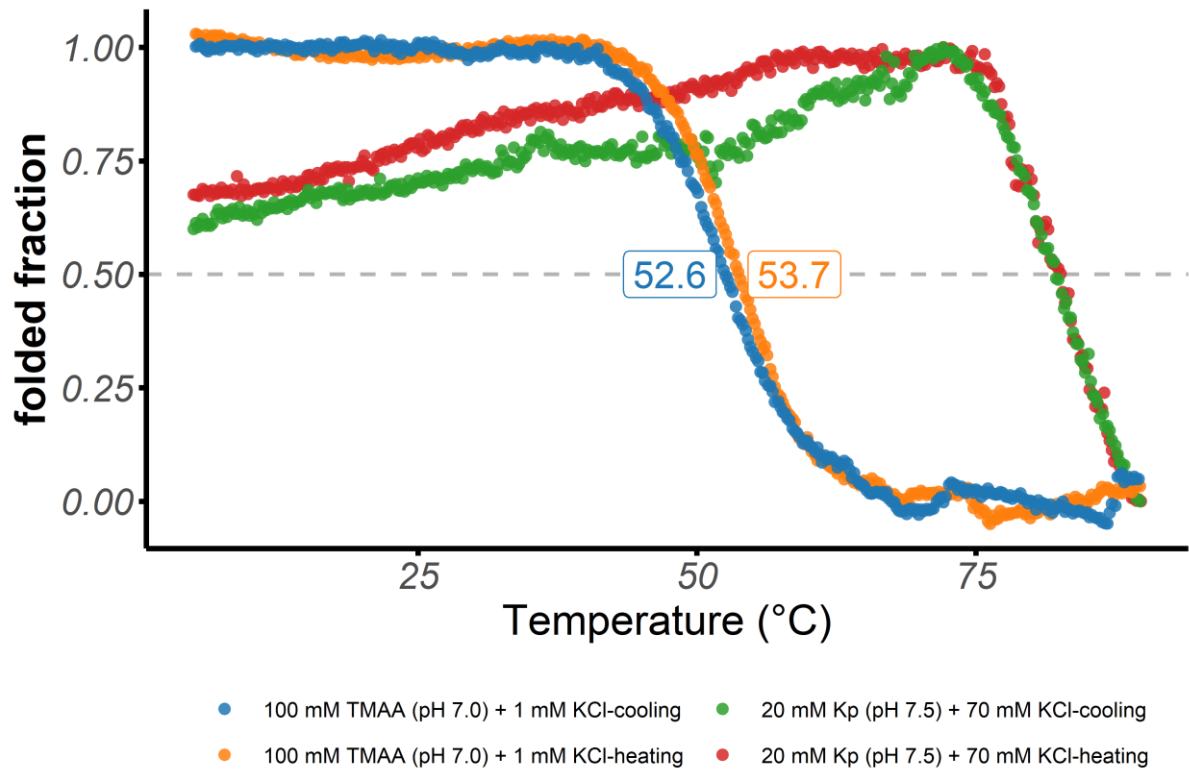
Structure diagram of 2LPW



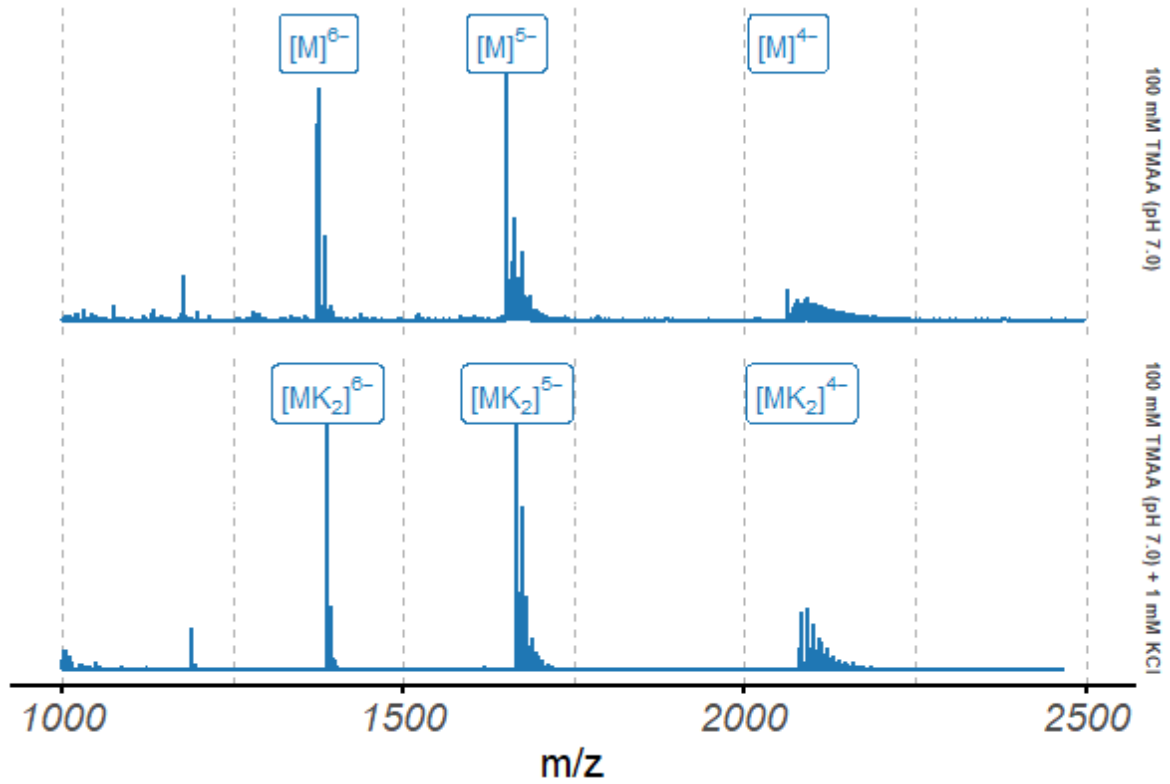
Circular dichroism spectra of the 2LPW oligonucleotide (10 μM), acquired at 25°C in 0.4-cm path-length cuvettes



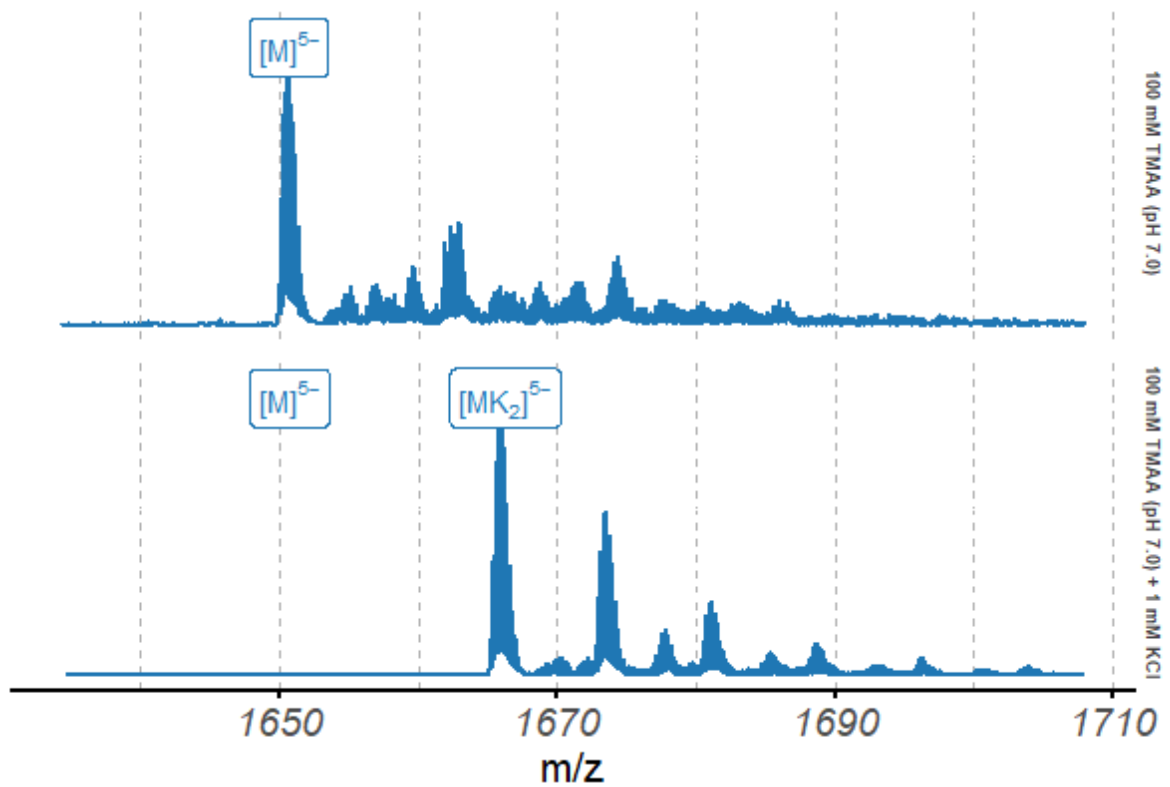
¹H-NMR spectrum of the 2LPW oligonucleotide, acquired at 25°C in 100 mM TMAA (pH 7.0) + 1 mM KCl



Folded fraction of the 2LPW oligonucleotide as a function of temperature, determined by UV-melting ($\lambda = 295$ nm)



Native ESI-MS spectra of the 2LPW oligonucleotide (10 μ M)



Native ESI-MS spectra of the 2LPW oligonucleotide (10 μ M), focused on the 5^- charge state